

DOORWIN

E N G I N E E R I N G

Factory Address: 156, Sahitya Industrial HUB,
Gatrad to Kunjad Road, Near shivbhumi Estate,
Village Bakrol-Bujarang, Bakrol to Gatrad road,

Tal. Daskroi, District Ahmedabad. 382430

Phone Number: 7405007900

Cell No.: 8000995093

E-mail :sales@doorwinengineering.com

: jagdish@doorwinengineering.com

URL: www.doorwinengineering.com

: www.firedoorsindia.in

BUSINESS PROFILE

INTRODUCTION

After prolonged experience into industrial door manufacturing as individual, we started own manufacturing plant in year 2010. After exhaustive struggle and experience we have been able to create unique position amongst reputed industrial customer. We are **ISO 9001-20015** Certified company. We have created state of art production, testing, dispatch and erection service facilities to cater the premium need of our valuable customer. We have almost all the production facilities to eliminate third party contracts and out sourcing. We have all required machinery and tools in-house to facilitate complete production processes. Hence we have been able to provide best quality products and services at competitive price and within definite time limits to customers. We have set up in house facility for quality checking of raw materials, Goods-in-process and final products. We have set up standardized process for packaging of finishes goods in such a way that we have achieved 100% damaged free deliveries. We provide the facilities for door delivery of finished goods to the customers for hassle free transportations. We are certified with ISO 9001-2015 for quality management and Central Building Research Institute (C.B.R.I.) Roorkee for fire doors.

PRODUCT RANGE

We manufacture the following wide range of doors, windows and main gates in our plant and provide fixing services at site.

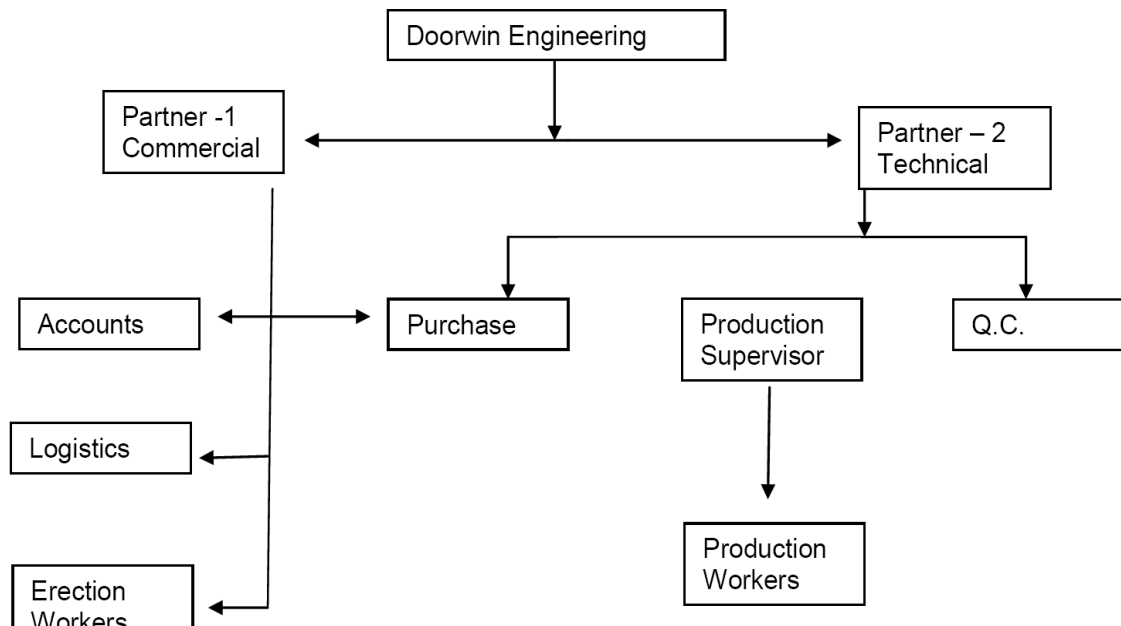
- Fire Resistant Swing Type Doors
- Fire resistant Sliding Doors (Big sized doors)
- Emergency Exit Doors
- H.M.P.S. (Hollow Metal Pressed Steel) Doors for General Use
- Clean Room Doors: for Pharmaceuticals, Food factory and hospitals
- Acoustical Doors : for Theaters, Auditoriums, Offices
- Blast Proof Doors:
- Windows: Fire Resistant Pressed steel / Steel Section
- Factory Main Gates: Motorized Main Gates.

Our products are good in their high tensile strength, excellent surface finish and dimensional accuracy, and therefore they are extensively used in offices, schools, commercial buildings, residential houses and factories & industries.

OUR TEAM

We believe in quality management systems and hence all persons in our factory work as team member. There is total number of 23-25 numbers of members into our team. All persons perform their responsibility as per following Organization chart provided.

Organization Chart:



- Office Staff – 5 persons.
- Shop Floor: Production –17 Persons.
 - Fabrication Job – 15 persons
 - Colour / powder coating – 5 persons
 - Packing & Forwarding – 4 persons
- Erection (Site Works) --- 12 persons.



PLANT & MACHINERY

We have 200Sq. yard covered and 640Sq.yard open space area for factory. We have all arrangement in factory as per ISO standards. Provision of racks and shelves for storages of materials. All, raw material, work-in-process and finished goods are stored in proper places and labeled with their names of items and quantity in stoke. We keep machinery, materials, goods and instruments in apple-pie-order.

We have installed following machineries in our plant.

- 1) **Fibre Laser Cutting M/C:** STPL make up to 5 mm thick sheet cutting capacity.
- 2) **NC-Hydraulic Bending:** Bending machine: capacity for 5 mm sheet bending up to 8 ft width. Automatic machine.
- 3) **Hydraulic Shearing:** Sheet Cutting machine: capacity for 5 mm sheet cutting up to 8 ft width. Make Dev Hydraulics
- 4) **Mechanical press:** Making cut outs for corner notching, hinge slot, lock slot, Flush bolt slots, Anchor fastener hole, etc. Total number of dies available 4.
- 5) **Welding machine:** MIG welding machine-2 no., Spot Welding Machine-1 no, Electric welding machine 3 numbers, 2 fixed type and 1 portable.
- 5) **Pillar Drill Machine: 1 no**
- 6) **Bench Grinder:-1 no**
- 7) **Power tools:** hand grinders – 5 No, Hand Drills – 5 number. Sander machines-2 no.
- 8) **Compressor:** 2 machines; 1 of capacity 3 hp and another of capacity 30 hp.
- 9) **Oven:** 12x7x8 ft size capacity to get 250 Celsius temperatures.
- 10) **Spray booth:** size 5x5x3 ft size for spraying of dry powder on job.
- 11) **Spray Gun:** Powder spray gun
- 12) **Tank:** for 3 in 1 chemical process.



PRODUCTION CAPACITY

- 500 doors per month with frame and complete hardware set and erection.
- 1000 sq.m wall partition per month
- 2000-3000 number of door frames if only frames are required.
- 10-15 No of main gates.
- 500-700 no. steel windows.



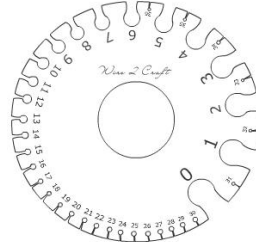
QUALITY MANAGEMENT

We follow ISO 9001:2015 Quality management systems. We have set up procedure to check quality of door we manufacture.

- Physical dimension and Gauge checkup of raw material we purchase.
- Laboratory test for the chemical composition of raw material.
- Continuous monitoring of quality on each stage of process by physical dimension checkup.
- Assembling of doors and frames randomly selected and checked for dimensions and operational working and provisions of fixtures.
- Inspection after Powder coating Or paint of doors and frames.

We have facilities for required testing instruments in our factory. We have following testing instruments in-house.

- Digital Micrometer screw
- Digital Vernier Calipers
- DFT meter
- Measuring tapes
- Gauge check circle
- Angle measuring scale.
- Spirit level checking gauge
- Plumb level checker



PACKING AND FORWARDING

It is very crucial to do good quality packaging of finished goods to provide best quality of product. If, proper packaging is not done than best quality product may reach in verse condition to customers. Based on this philosophy we have developed proper packaging systems of out-ward finished goods.

Packaging of finished goods, at our place, are done very carefully, with use of good quality packaging material in in-house facility.

Packaging of finished goods are done in two layer packaging,

- Wrapping of thick polyethylene on finished goods
- Packing into cardboard carton and transparent plastic tape.
- Door hardware packed into wooden boxes.
- For Export purpose; doors too packed in wooden boxes and sea worthy packing for exports.
- All packages are labeled with name and quantity of items contains in them.
- After packaging goods are stored in clean, dry and r.c.c. floor and tope place.

CERTIFICATION

We have certified our quality management systems with ISO 9001-2015 with QMS certification. And prototype fire door is tested fire resistant door in Central Building Research Institute---Roorkee (CBRI) for the fire resistant test and obtained certificate.

Certificate can be produced to clients on request.

OUR CLIENTS

Within short period of time, we have succeeded to be able to have trust of very valuable client from various industries. We are proud to deliver quality work and gain client satisfaction. For Name of our valuable Client, Please check into Client List.

CONTACT US

For more information Please contact us, Our contact Details As follow.

Name: Mr. Jagdish Patel (Chairmen)

Number: 7405007900 / 8000995093

E-mail : jagdish.patel@doorwinengineering.com

URL: www.doorwinengineering.com